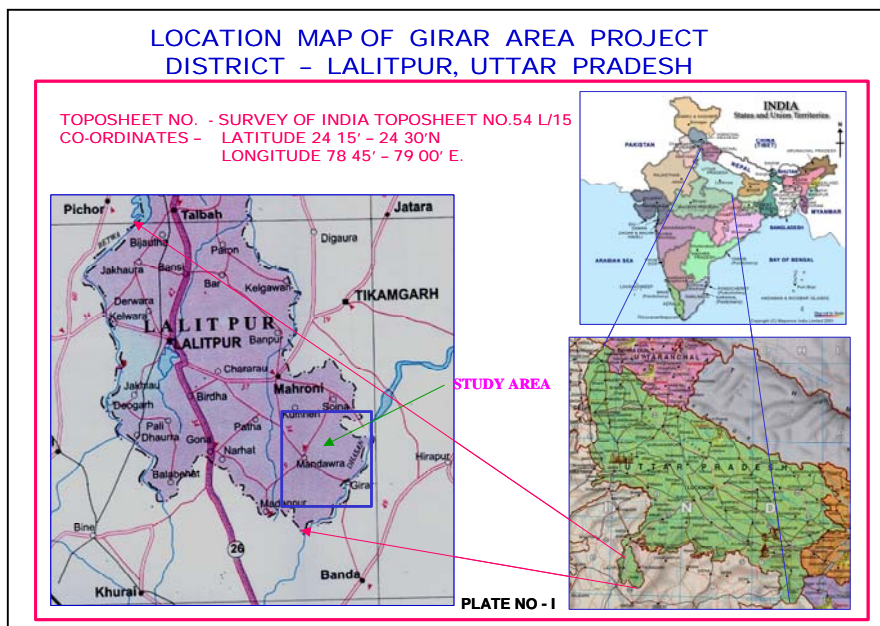


**GEOLOGICAL REPORT ON THE
PRE-SELECTION STUDIES OF PRIMARY GOLD PROSPECTS
GIRAR AREA**

**BUNDELKHAND GRANITE COMPLEX
DISTRICT - LALITPUR, UTTAR PRADESH**

EXECUTIVE SUMMARY



MINERAL EXPLORATION CORPORATION LIMITED

(A Government of India Enterprise)

SEMINARY HILLS, NAGPUR

JULY 2004

GEOLOGICAL REPORT ON PRE-SELECTION STUDIES OF PRIMARY GOLD PROSPECTS IN GIRAR AREA BUNDELKHAND GRANITE COMPLEX LALITPUR - DISTRICT, UTTAR PRADESH

EXECUTIVE SUMMARY

1.0 LOCATION

Girar area of Bundelkhand Granite Complex district Lalitpur, Uttar Pradesh is bounded by 24° 15' - 24° 30' latitude and 78° 45' - 79° 00' longitude. The study area falls in Survey of India Toposheet No. 54L/15. District Headquarter is Lalitpur, which is 80 km NW of study area. The nearest Railway Station is Lalitpur connecting Delhi and Chennai stations.

2.0 GEOLOGY AND STRUCTURE

The area of study forms southern part of Bundelkhand Granite Complex of Archean age.

The major part of Zone-IV and Zone-VIII is under the soil cover with limited outcrops. The rock units can be divided into pre-granite rocks, granite rocks and intrusives.

The pre-granitic rocks are represented by schistose rocks i.e. Talc-Chlorite schist and Quartz-sericite schist. The other constituents of pre-granitic rocks are epidiorite and epidosite. All pre granitic rocks are trending almost E-W.

The granitic rocks are represented by migmatites (Localised), granites, diorite, generally having two to three sets of joints trending N20° E, E-W and NE-SW.

The main intrusives in the area are represented by quartzo-felspathic veins in the form of criss-cross veins, dolerite as dykes and quartz as thin veins to reefs.

3.0 MINERALISATION.

Both Zone-IV and Zone-VIII are having rare surface manifestation of mineralisation. Only few sulphides in the form of very fine disseminations are seen mostly in smoky quartz veins. Malachite staining associated with pink granite are observed in well cutting NE of Bighai village. A few iron minerals are present mostly along joints and fracture plane in quartz veins and epidiorite.

4.0 QUANTUM OF WORK DONE

MECL has carried out detailed Geological Mapping & Topographical survey covering 10.0 Sq.km. area, 415.54 Cu.m of Trenching (397.20 cu.m in 4 Trench 2 trench each in Zone IV & zone VIII) & pitting (18.30 cu.m in 12 pits, 9 pits are in Zone-IV and 3 pits are in Zone-VIII.), 1288 Nos of Primary Samples for Au (Geochem + Outcrop + Trench + Check), 439 Nos of Primary Samples for Cu (Outcrop + Trench + Check), 173 Nos of Primary Samples for Pt+Pd, 173 Nos of Primary Samples for Ag were analysed. 58 Nos of spectroscopic studies, 11 Nos of samples for whole rock analysis and 11 No XRD studies samples were also analysed. Petrographic studies on 86 Nos.of samples and Minerographic studies on 66 Nos of samples and 17 Nos of specific gravity determination test were also carried out by MECL in the Block. Based on the above data and earlier Remote sensing studies and earlier data of GSI and UP DGM, an exploration report was submitted by MECL.

5.0 ORE RESERVE ESTIMATION

The pre-selection studies carried for gold and associated metals in Zone-IV and Zone-VIII in Girar area in Bundelkhand Granite Complex indicate absence of gold in the rocks as well as in soil samples and if present it is only in traces. It can be concluded that Zone-IV and Zone-VIII do not hold potential for further search of gold.

Remote sensing studies conducted in Girar area for identification of primary gold prospects by MECL has resulted in delineation of nine Zones (Zone-I to Zone-IX).

Although pre-selection studies conducted by MECL in Zone-IV and Zone-VIII did not reveal any significant gold mineralisation. It is recommended that other Zones identified by remote sensing studies in Girar area of Bundelkhand Granite Complex in

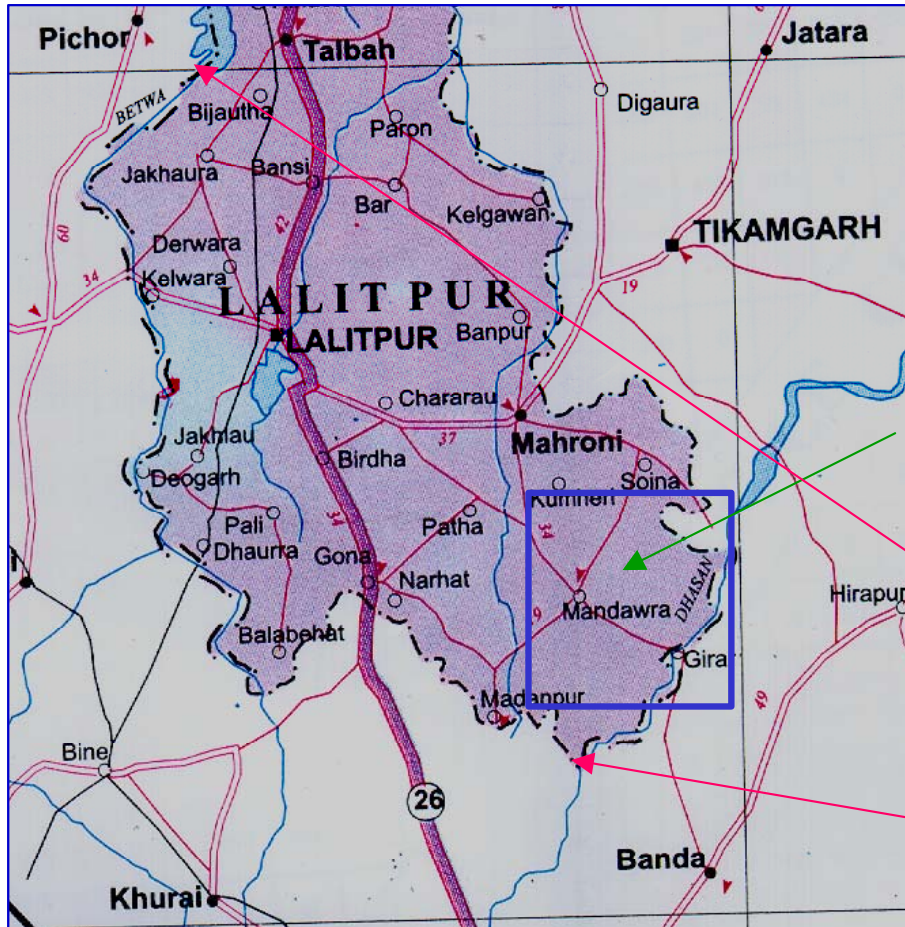
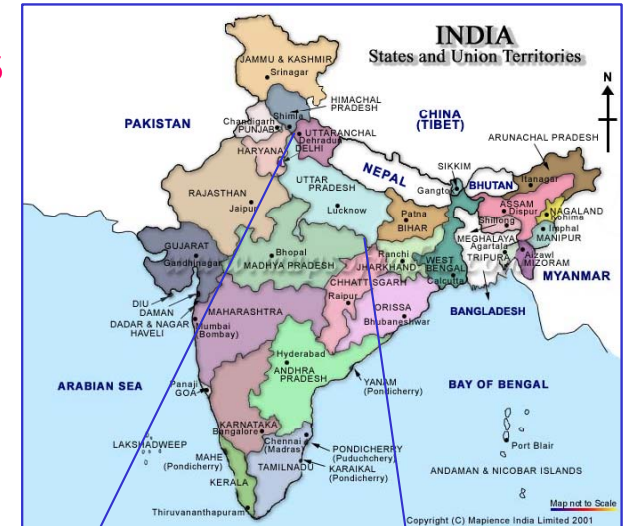
Lalitpur district of Uttar Pradesh may be taken up for pre-selection studies for identification of primary gold prospects.

The Deposit has been classified as Category 'D' of UNFC 333.

The Total Cost of Exploration is Rs. 44.43 Lakhs.

LOCATION MAP OF GIRAR AREA PROJECT DISTRICT - LALITPUR, UTTAR PRADESH

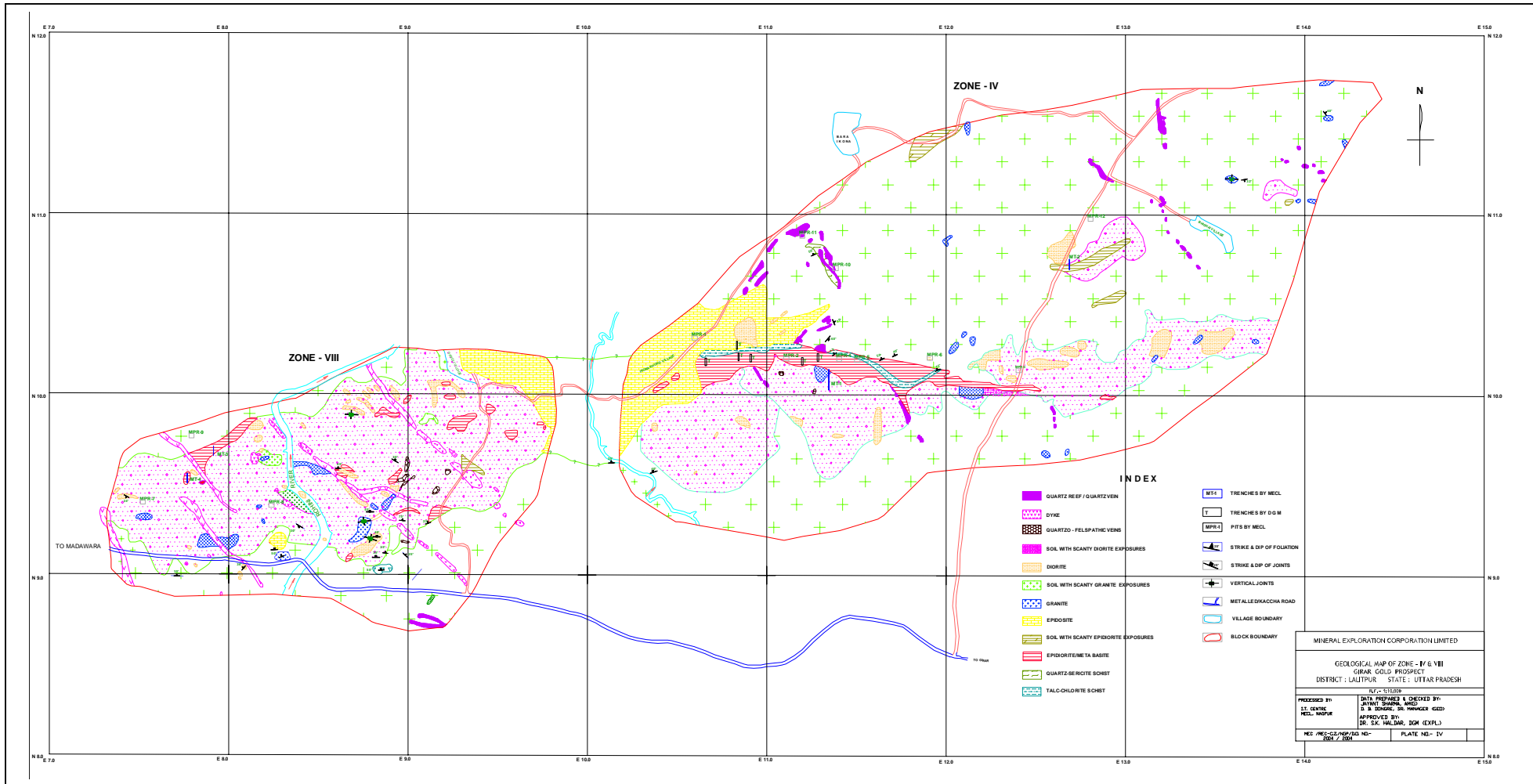
TOPOSHEET NO. - SURVEY OF INDIA TOPOSHEET NO.54 L/15
CO-ORDINATES - LATITUDE 24 15' - 24 30'N
LONGITUDE 78 45' - 79 00' E.



STUDY AREA

PLATE NO - I

GEOLOGICAL MAP OF ZONE - IV & VIII, GIRAR AREA



GEOLOGICAL MAP OF PIT WALL

PIT NO. - MPR-12
 LOCATION - 11.0 / 12.8

SCALE - 1 : 20

ASSAY VALUE:

Au - <0.1 gpt , Cu - 21 ppm

INDEX

-  SOIL
-  QUARTZ REEF / QUARTZ VEIN
-  QUARTZO - FELSPATHIC VEINS
-  DIORITE
-  GRANITE
-  EPIDIORITE/META BASITE
-  QUARTZ-SERICITE SCHIST
-  TALC-CHLORITE SCHIST

