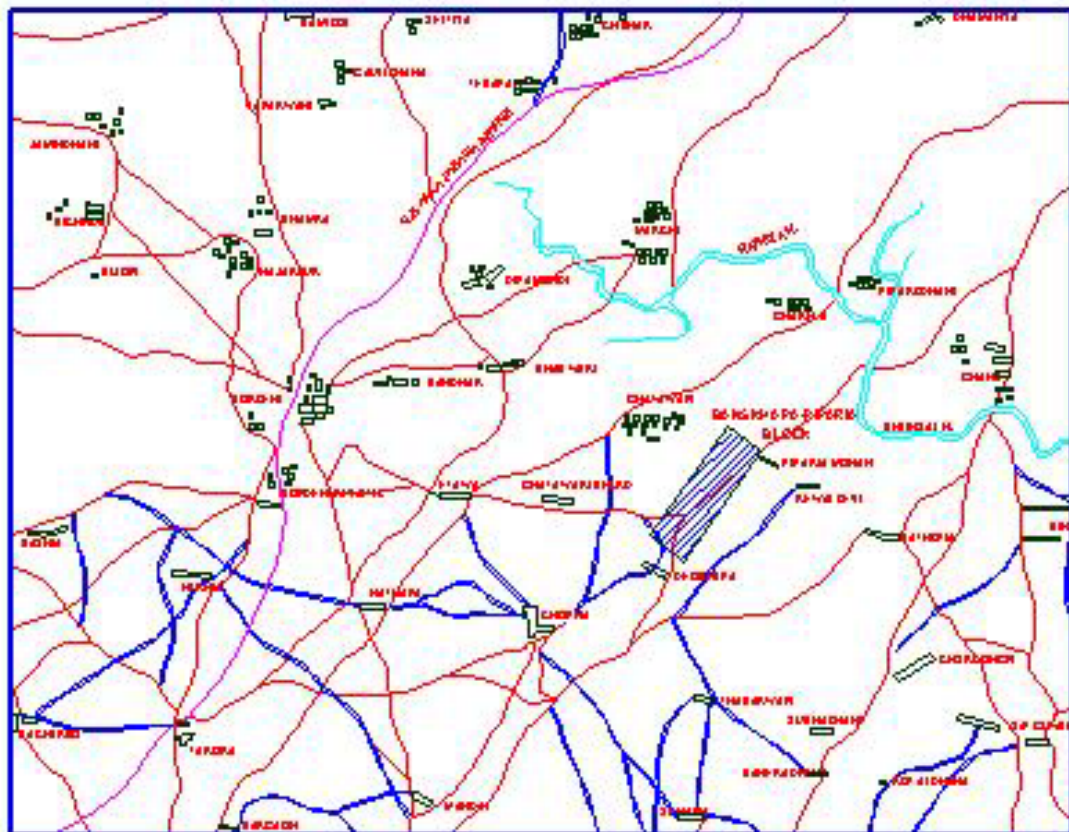


EXECUTIVE SUMMARY

**GEOLOGICAL REPORT ON EXPLORATION FOR
BASE METAL MINERALISATION IN
BANSKHAPA-PIPARIYA
(SUB-BLOCK-I)
DISTRICT-BETUL, MADHYA PRADESH**



MINERAL EXPLORATION CORPORATION LIMITED
(A Government of India Enterprise)
Dr. Babasaheb Ambedkar Bhavan,
High Land Drive Road, Seminary Hills,
CENTRAL ZONE
NAGPUR-400 006
NOVEMBER-2007

**GEOLOGICAL REPORT ON EXPLORATION FOR
BASE METAL MINERALISATION IN
BANSKHAPA-PIPARIYA (SUB-BLOCK-I)
DISTT: BETUL, MADHYA PRADESH
(PHASE-I)
EXECUTIVE SUMMARY**

1.0 LOCATION

The block lies in Survey of India Toposheet No.55 K/5 and is bounded by Latitude 21° 59' 28" - 22° 00' 05" N and Longitude 78° 24' 00" - 78° 24' 12" E.

Banskhapa a small village is located in Betul district of Madhya Pradesh. It can be approached by 30 km metal road from Multai a tahsil head quarter and railway station on Chennai-Delhi, trunk line of Central Railway to Bordehi village and there on 5 km by semi metal road.

2.0 GEOLOGY AND STRUCTURE

Most of the area in the block is covered with soil & alluvium. The geological formations exposed in the block and intersected in the boreholes are gabbro/pyroxinite as dykes & sills, Meta basic, Quartz-Biotite-Muscovite-Gahnite, Sericite schist, Garnetiferous, Biotite, chlorite ± Staurolite ± anthophyllite schist, and Calc silicate rock. The general trend of the rocks exposed in the blocks is NE-SW with foliation dip of around 55° due South East.

Number of shear zones had been intersected in the boreholes, out of which one major shear, intersected in the bh. MBK-4 (F-1) being normal fault shows distinct surface dislocation in the continuity of the rocks units. The shear is trending NW-SE in northern portion & then east in the southern portion of the block. The shear is so intense that the trace on the surface is followed by a Nala in the block.

3.0 MINERALISATION.

The mineralisation is mostly hosted by granite gneiss and feldspathic Quartz-mica gneisses in the block. Though the exploration was aimed for Cu, Pb, Zn and Cd, only Zn shows good concentration to be identified as lodes, where as Cu is associated as a prominent by product. The Pb & Cd are in traces only.

4.0 QUANTUM OF WORK DONE

MECL has carried out detailed Geological Mapping & Topographical survey covering 0.50 Sq.km. area, 1250Mtrs of drilling in 6 boreholes, 210 Nos of primary and check samples for Pb, Cu, Zn & Cd were analysed. Petrographic studies on 30 Nos. of samples and Minerographic studies on 30 Nos of samples and 30 Nos of specific gravity determination test were also carried out by MECL in the Block. Based on the above data and earlier data of GSI, an exploration report was submitted by MECL. Composite samples were not prepared as no significant mineralisation at 2% TMC cut-off was intersected in the boreholes except alone value.

5.0 ORE RESERVE ESTIMATION

Nine nos. of Lodes have been identified at 1% Zn, and 2.00 m minimum stopping width (MSW) cut-off namely 1A, AB, 2A, 2B, 2C, 3A, 3B, 3C & 4. However at 2% Zn and 2.00 m MSW cut-off, Lodes were also identified for reserve estimation for associated copper. The Pb and Cd are in traces only.

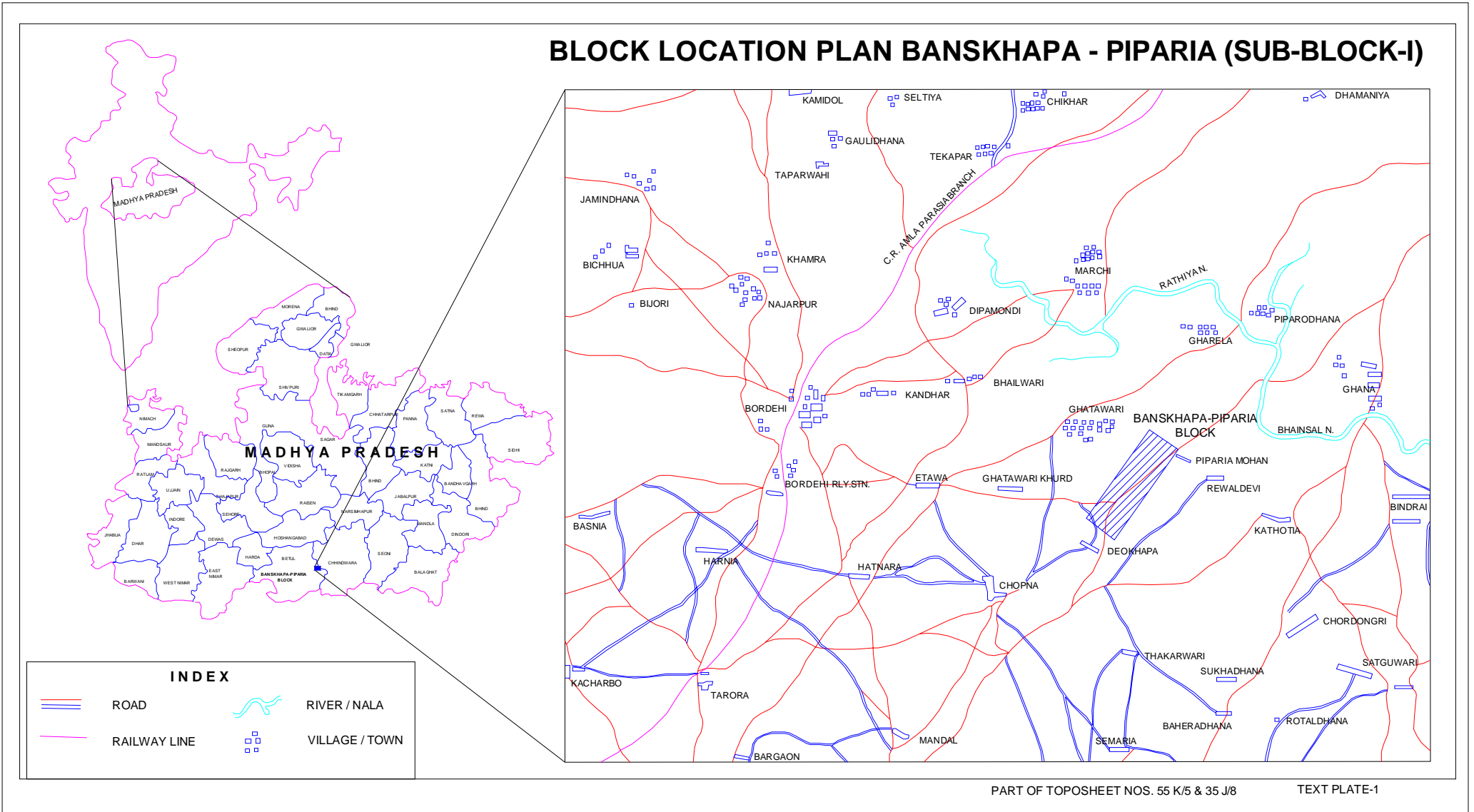
The reserves of 1.198 m.t. with average grade 2.75% Zn and 0.41% Cu at 1% Zn cut-off in the strike length of 257.25 meter where as at 2% Zn cut-off 0.919 m.t. with average grade 3.24% Zn and 0.51% Cu have been estimated in the strike length of 219.38 meters in the block explored by MECL.

The Deposit has been classified as Category 'D' of UNFC 332.

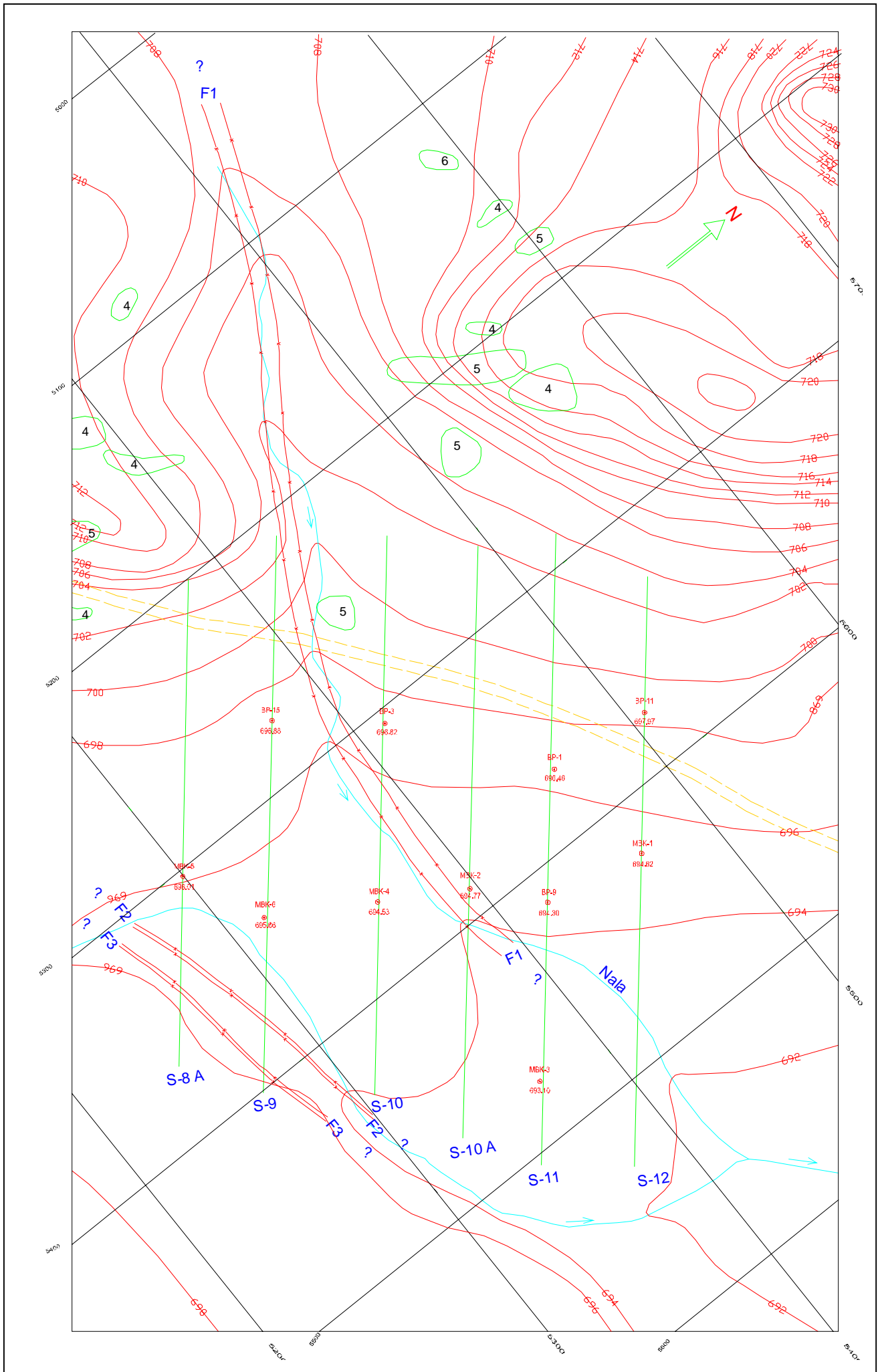
The Total Cost of Exploration is Rs. 65.69 Lakhs.

LOCATION MAP OF BANSKHAPA – PIPARIA BLOCK

BLOCK LOCATION PLAN BANSKHAPA - PIPARIA (SUB-BLOCK-I)

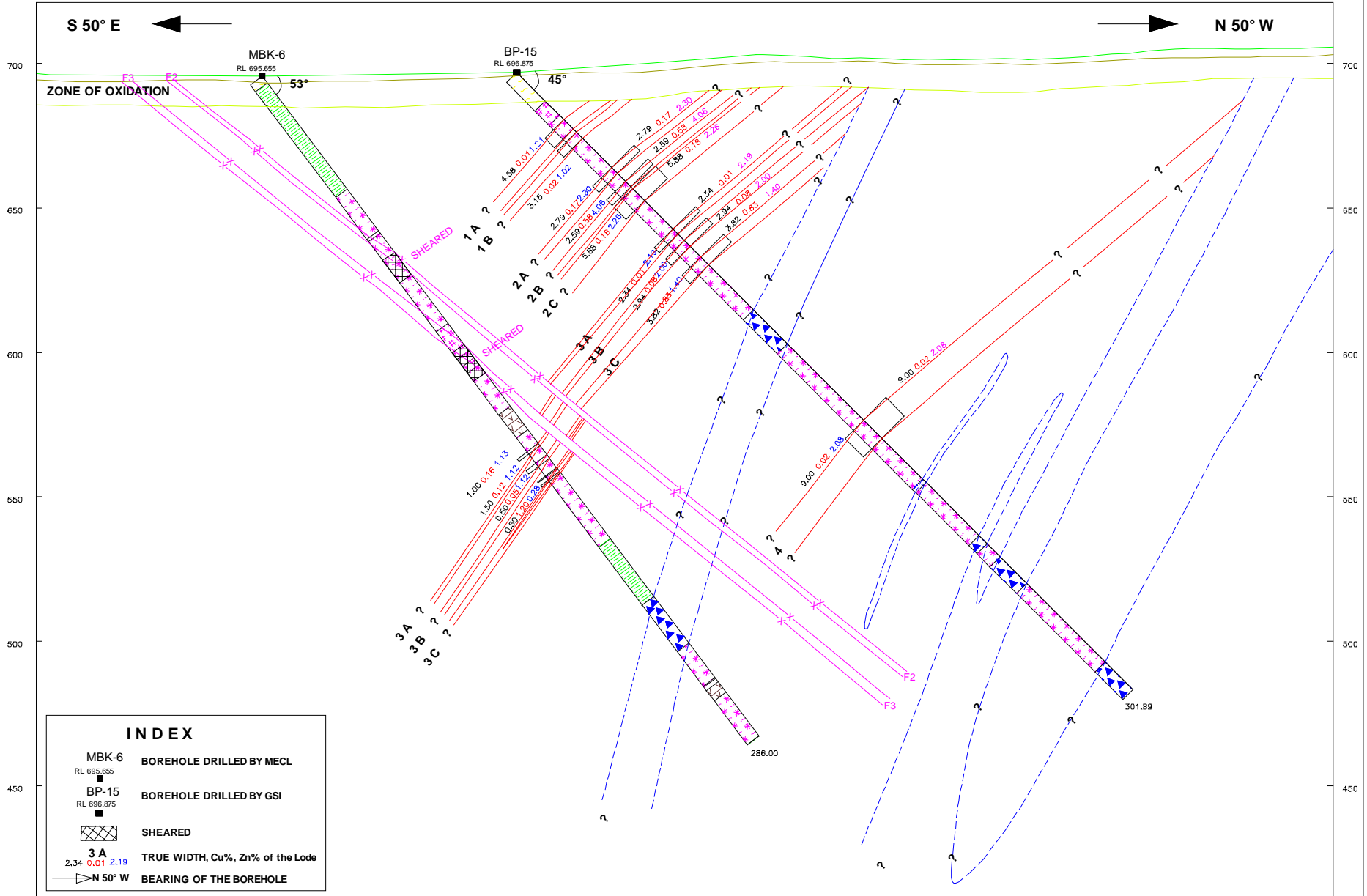


GEOLOGICAL MAP ALONG WITH BOREHOLE LOCATIONS



GEOLOGICAL CROSS SECTION

GEOLOGICAL CROSS-SECTION : S-9



INDEX

- MBK-6** BOREHOLE DRILLED BY MECL
 RL 695.655
- BP-15** BOREHOLE DRILLED BY GSI
 RL 696.875
- SHEARED**
- 3 A**
 2.34 0.01 2.19 TRUE WIDTH, Cu%, Zn% of the Lode
- N 50° W** BEARING OF THE BOREHOLE

LEVEL PLAN AT 600 mRL

